

IS-DG305P Series

5-port Gigabit unmanaged Layer 2 Industrial PoE Switch



The IS-DG305P Series full Gigabit unmanaged 5-port Ethernet Switches with 4 IEEE 802.3af/at PoE ports provide easy to use plug-n-play applications; a full Gigabit network provides higher throughput than legacy Fast Ethernet network. The cost effective IS-DG305P Series unmanaged switches can provide power and transmit data directly through a single Ethernet cable, which is ideal for factory production line or embedded into machine system. The IS-DG305P Series unmanaged switches also support network traffic optimization with useful function by default, such as QoS and storm protection.



Key features

- ▶ 5 / 4 Giga Copper ports with 0 / 1 100/1000 SFP ports
- ▶ Support up to 4 port IEEE 802.3af/at ports (15.4/30Watt)
- ▶ Support 9K Jumbo frames
- ▶ IEEE 802.3x flow control & back-pressure
- ▶ Layer 2 wire-speed switching engine
- ▶ Support IEEE 802.1p TOS/Diffserv, QoS
- ▶ Multicast / Broadcast / Flooding Storm Control
- ▶ Fan-Less design with wide-temperature range (-40~75°C)
- ▶ Redundant power input (46~57 VDC) & Reverse power protection
- ▶ Support Din-Rail or wall mount installation
- ▶ Support Relay Output Alarm
- ▶ IP 30 Protection
- ▶ 1.5KV Hipot
- ▶ 2KV surge immunity on RJ45 ports

Specification

Ethernet

| | |
|----------------|--|
| Operating Mode | Store and Forward, L2 wire-speed/non-blocking switching engine |
| MAC addresses | 2K |
| Packet Buffer | 1 Mbits |
| Jumbo frame | 9K |

RJ45 Copper ports

| | |
|-------------------------|---|
| Speed | 10/100/1000 Mbps |
| MDI/MDIX Auto-crossover | Support straight or cross wired cables |
| Auto-negotiation/Duplex | 10/100/1000 Mbps speed auto-negotiation; Full & Half Duplex |
| PoE | IEEE 802.3af/at (15.4 Watt / 30 Watt) |

Fiber Ports

| | |
|----------------------|--|
| Port Types supported | 100/1000 Base SFP Slot |
| Fiber port connector | LC/RJ45 connector for fiber ports |
| Optimal fiber cable | Typical 50 or 62.5/125 μ m for multimode (mm) Typical 8 or 9/125 μ m for single mode (sm) |

Power

| | |
|--------------------------|--|
| Power Input | Redundant Power Input, Terminal Block |
| Input Voltage Range | 46~57V DC |
| Reverse power protection | YES |
| Power Consumption | IS-DG305P-4 3.6 Watt, IS-DG305P-F-4 4.3 Watt (Without PD load) PSE: Max. 4 x 30Watt, 120 W total power budget |

Indicators

| | |
|--------------------------|--------------------|
| Power status indication | Power Input status |
| Ethernet port indication | Link & speed |

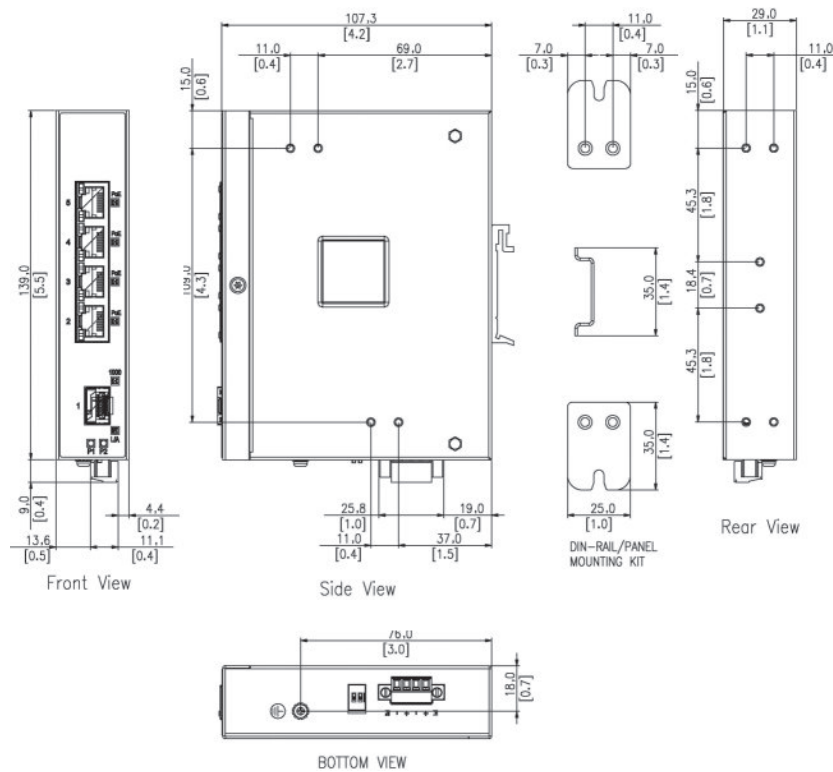
Environmental and Compliances

| | |
|-----------------------------|--|
| Operating Temperature | -40~75°C (Cold startup at -40°C) |
| Storage Temperature | -40~85°C |
| Humidity | 5~95% (Non-Condensing) |
| Vibration, shock, free fall | IEC-60068-6, -27, -32 |
| Certification Compliance | CE, FCC |
| Electrical safety | CE |
| EMC | FCC Part 15, CISPR 22 (EN55022) Class A IEC-61000-4-2, -3, -4, -5, -6 (Level 3) |
| RoHS & WEEE | RoHS (Pb free) and WEEE Compliant |
| MTBF | >25 years |

Mechanical

| | |
|--------------------|--|
| Protection | IP30 |
| Dimension | 112.2mm (H) x 29.1mm (W) x 89.4mm (D) (without DIN rail clip) |
| Weight | 295g |
| Installation | DIN-Rail mounting; Wall mounting |
| Relay Output Alarm | 1A, 24VDC, Normal Open |

Dimension Diagram



Ordering Information

| Available Models | Description | 10/100/1000Mb TX | 100/1000Mb FX |
|------------------|--|------------------|---------------|
| IS-DG305P-F-4 | Industrial 5 port Gigabit Layer 2 unmanaged PoE Ethernet Switch, 4 PoE af/at | 4 | 1 |
| IS-DG305P-4 | Industrial 5 port Gigabit Layer 2 unmanaged PoE Ethernet Switch, 4 PoE af/at | 5 | |

Accessories

- 100 Mb SFP Modules
- Gigabit SFP Modules